

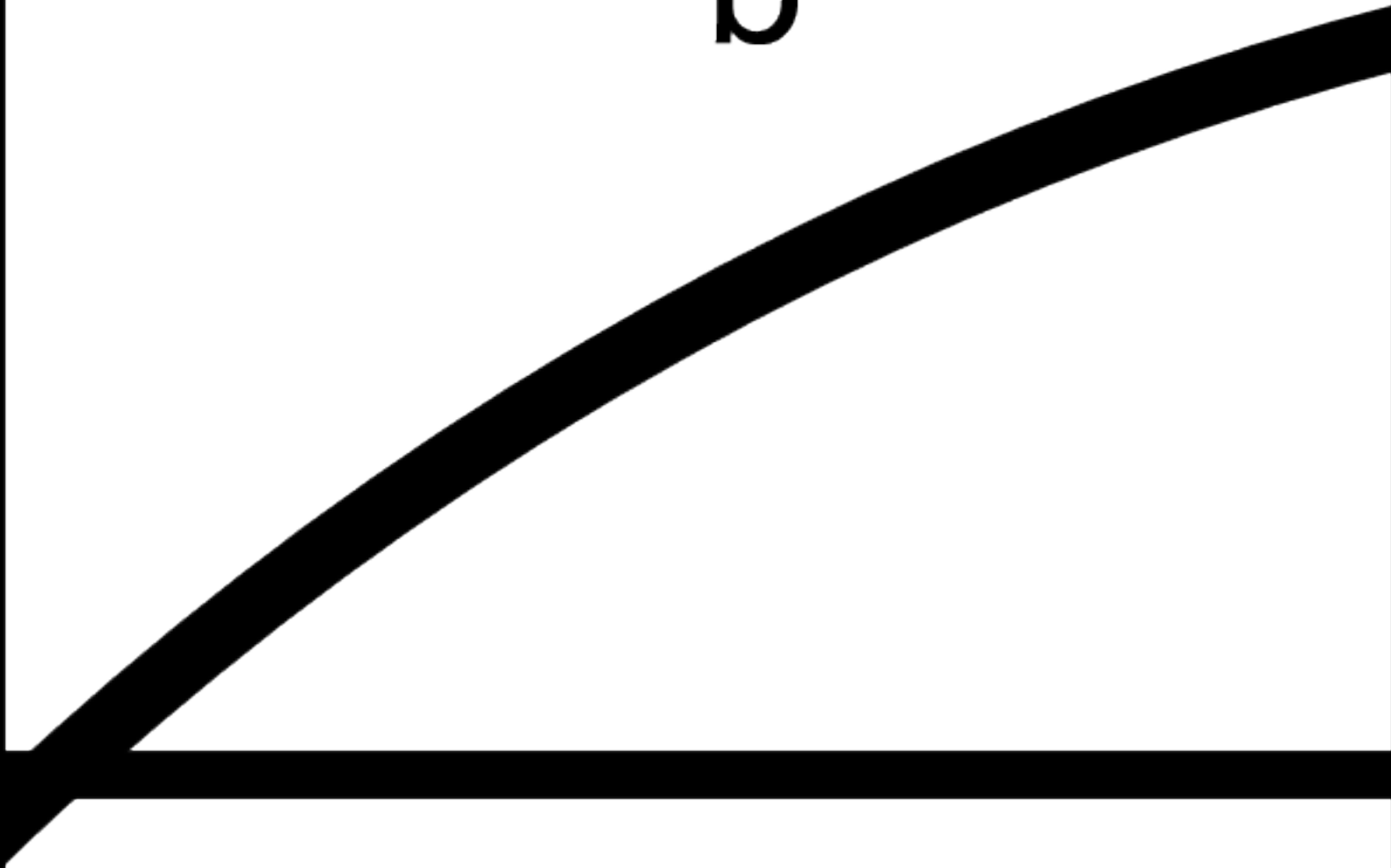
a

1

2

The diagram consists of a white background with a thick black horizontal line across the middle. The region above the line is labeled '1' and the region below is labeled '2'. In the upper right area, there is a label 'a'. In the lower right area, a thick black curved line starts from the bottom edge and curves upwards towards the right edge.

b



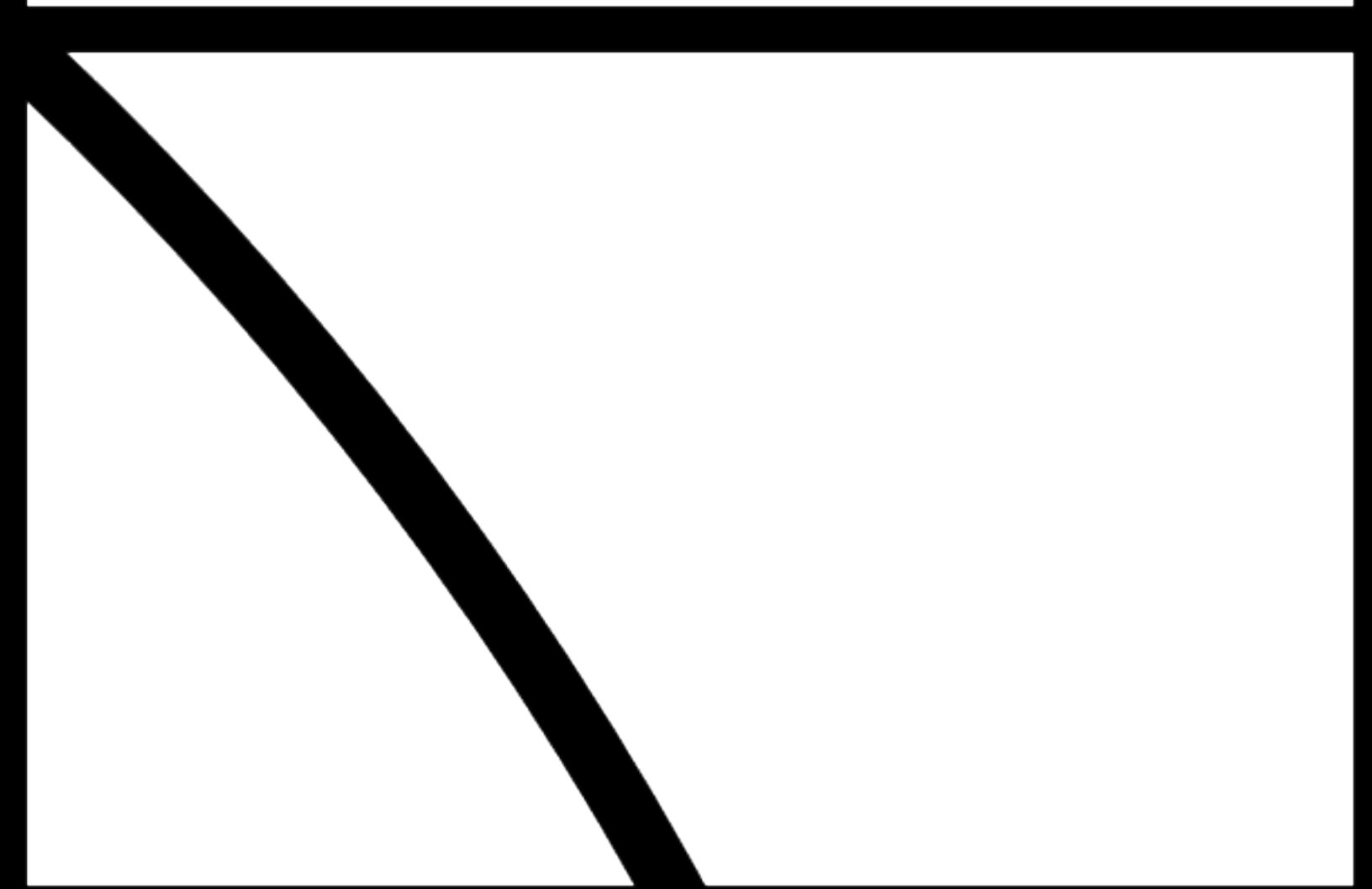


C



d

e

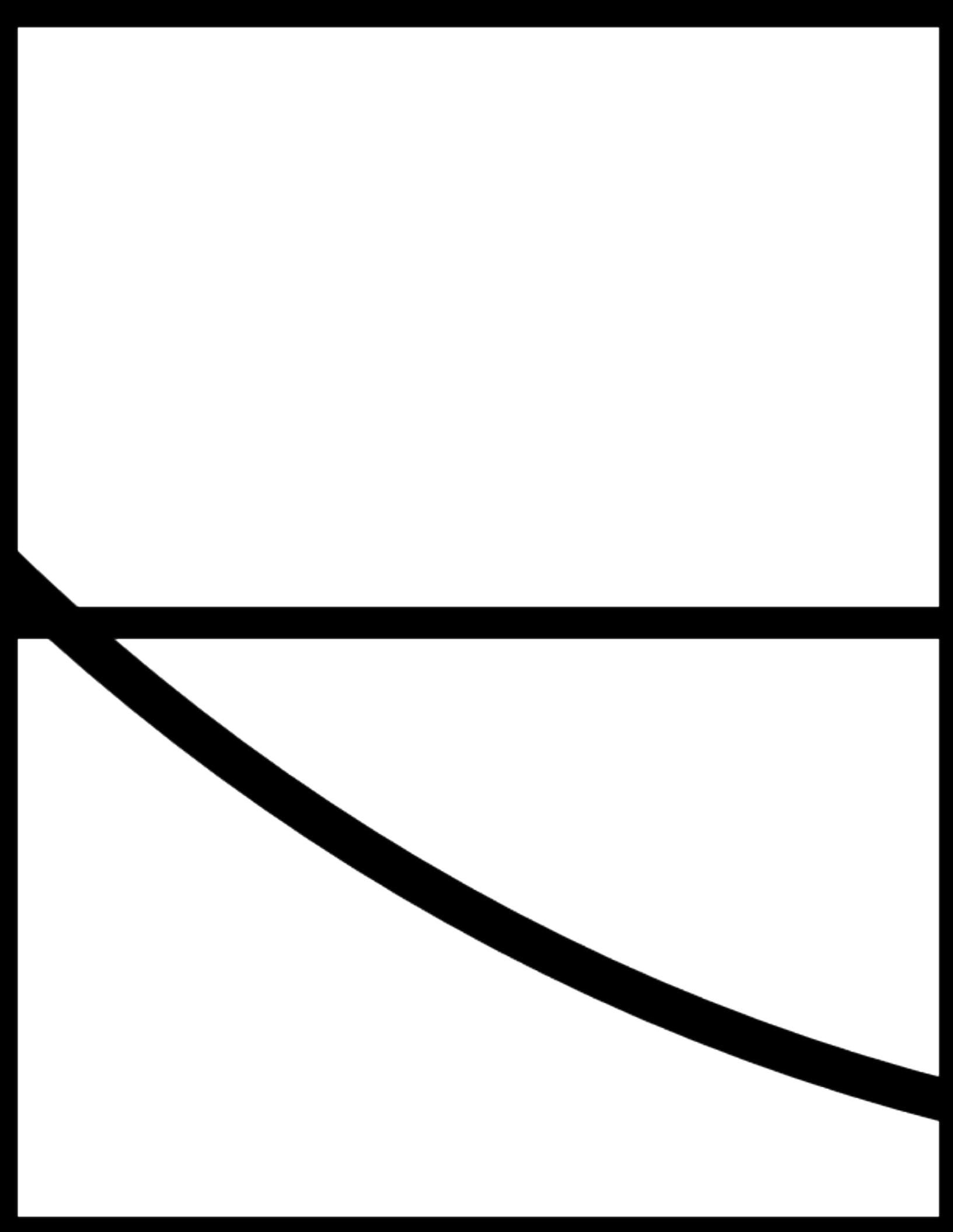


3

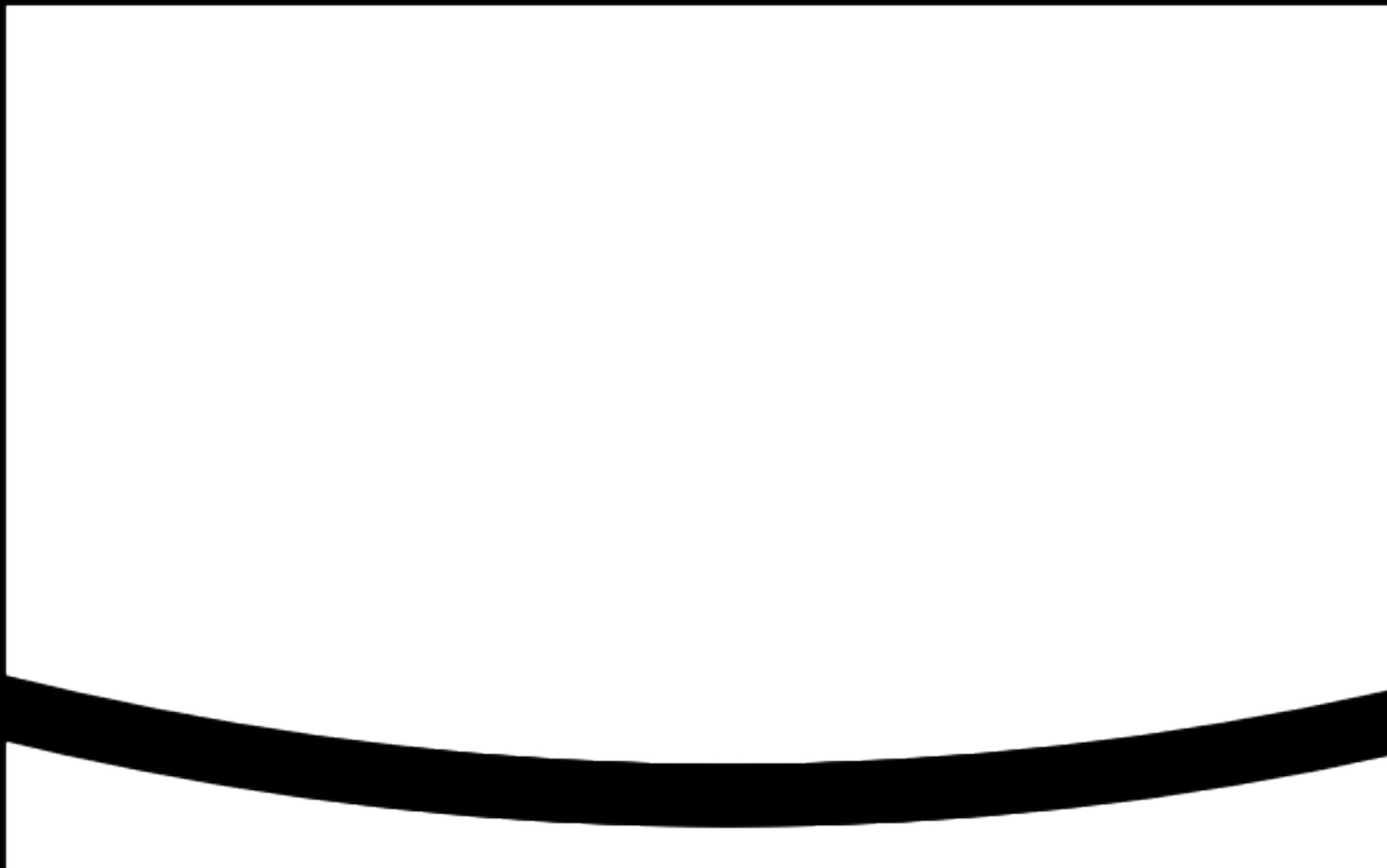
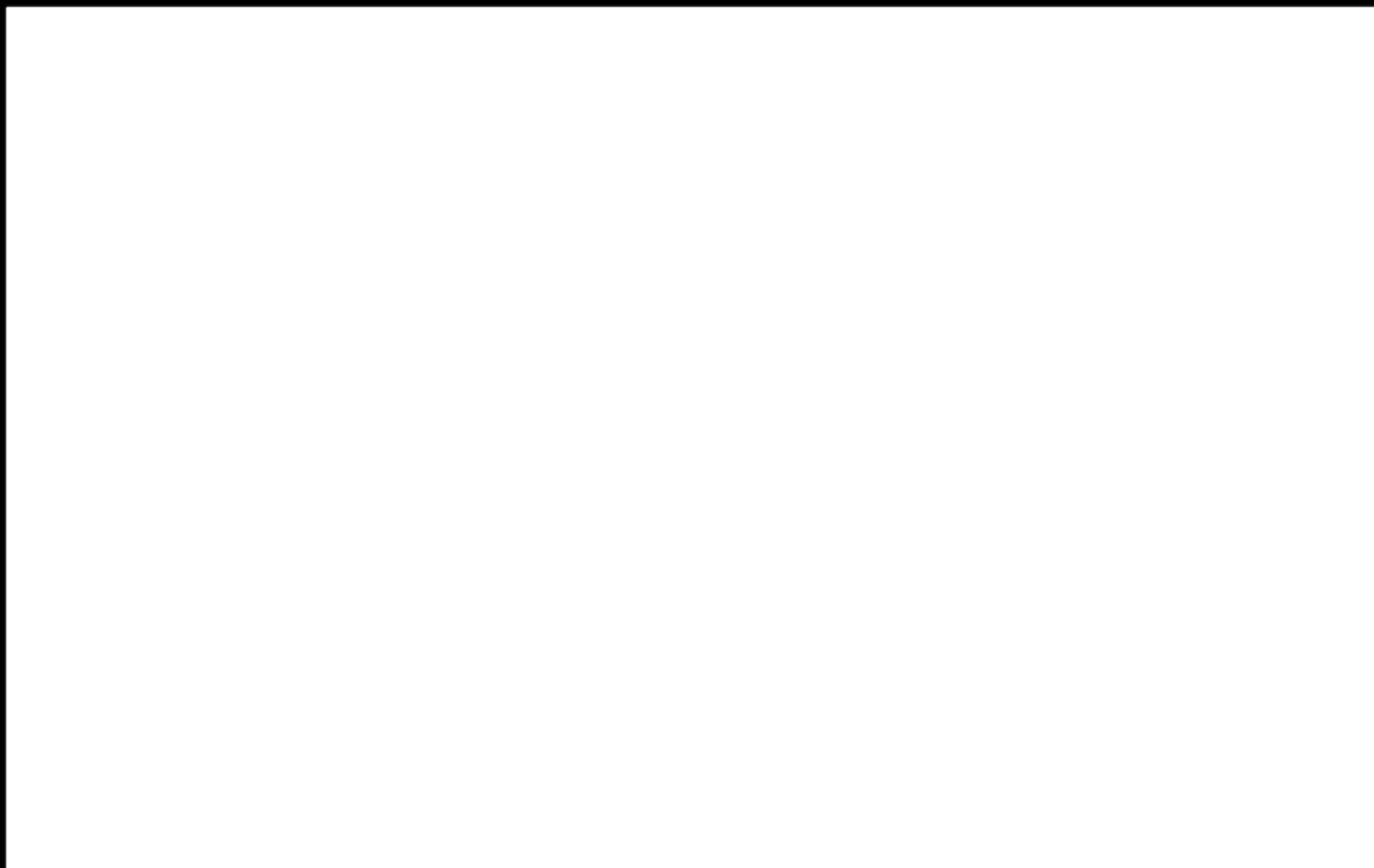
4

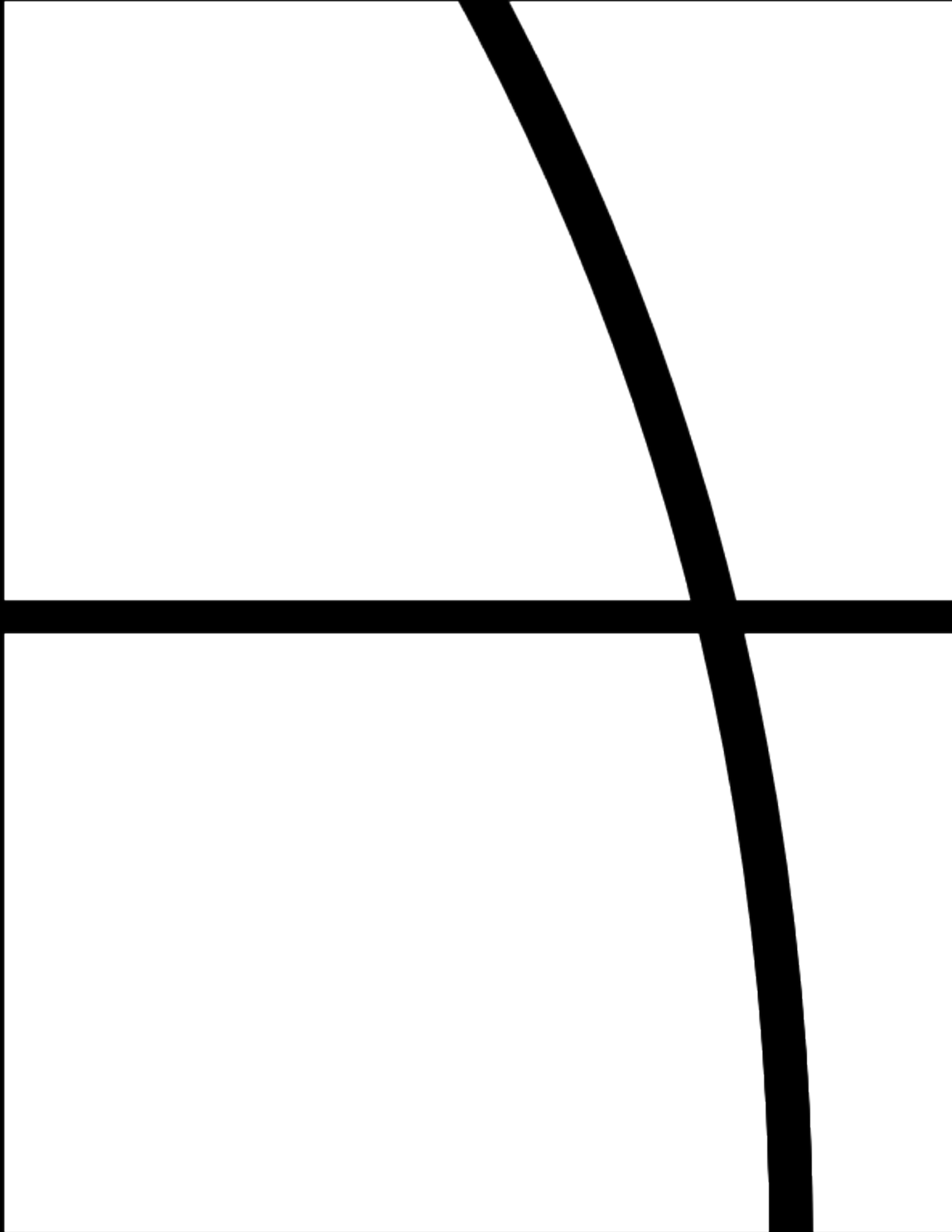
7

8









5

6

